

**TUNLAND G7**

HI RIDER SINGLE CAB

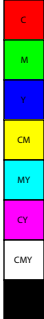


TUNLAND G7 HI RIDER SINGLE CAB

			Workhorse
Gross combination mass(kg)			2980
Curb weight(kg)			1900
Overall dimensions(L*W*H) (mm)			5340×1940×1870
Carriage interal dimensions(L*W*H)			1520/1580/440
Wheel base (mm)			3110
Min. Ground clearance(mm)			210
Version			G7
			4X2 Workhorse
Overview	Drive type	Double cabin	•
		Right Hand driving	•
	Drive	4*2	•
		4*4	-
	Box type	Standard	•
	Fuel	Diesel	•
Powertrain	Engine model		D01
	(L) Displacement (L)		2.0
	(kW) Power (kw)		120
	(N·m) Max. Torque(N·m)		390
	Transmission Type		6MT
	Emission Standard		IV
Suspension	Suspension System (Front/Rear)		
Exterior	Front grille	FOTON Spark Grey	•
		FOTON Sign Bright Chrome	X
		Grid Design	-
	Integrated far and near lens light(Blackening)		•
	LED Day Time Light		-
	Front Fog lamp		•
	Outside rear-view mirror	Chromed	•
		Spark Grey	•
		Electrical adjustment	•
		Manual fold	•
		Turning light with LED	•
	Wheel	Tire Type	•245/70R16 (Steel)
		Steel	•
		Aluminum alloy	-
		Spare Wheel	•245/70R16 (Steel)
	Side step pedal		-
	Rear mudguards		•
	Handrail	Spark Grey	•
	Doors Windows	Ordinary glass	•
		Internal rope hook	•
	High-mount brake lamp		•
	Rear window with the function of defrosting		•
	Rear Bumper		•



Interior	Style		●	
	Ceiling material	knit	-	
		Non-woven ceiling	●	
		Ceiling Handrail (Fold)	●	
		With the makeup mirror on Driver & co-driver sides	-	
	Sun vison	Without the makeup mirror on Driver & co-driver sides	●	
	Interior rearview mirror	Manual & Anti glare	●	
	A-pillar handrail	Driver (Hard material)	●	
		Co-driver (Hard material)	●	
		Infotainment System	● (12.3)	
	Steering Wheel	PU steering wheel + backlight button (FM + volume), Bluetooth, instrument page turning, speed cruise	●	
	Seats	Style		● Monochrome --Black color
		Seat exclusive identification		●
		Fabric	Knitted Seats	●
			New seats (newly development)	●
			Knitting + imitation leather	-
			Main driver 6-way manual	●
			Co-driver 4-way manual	●
	Storage space	Armrest box		●
		Glove box-with damping		●
		Dashboard storage box with hover function		●
		Dashboard Bill Card Box		●
		Door storage box		●
	Front dome light		●	
	Mobile ashtray		-	
	Hydraulic power steering		●	
	Four-way adjustment column		●	
	Remote central control lock		●	
Operation devices	Four door electric window		●	
	One key drop for driving glass		●	
	One-key lift of main driving window with anti-trap		-	
	smart key		●	



Intelligent Technology	Carplay & Andriod Auto		•
	Drowsy Driving Reminder		•
	Audible Warnings Include Key-In-Ignition		-
	anti-misoperation and lockout		•
	light not-off warning device		•
	Automatic unlocking after engine shutdown		•
	Headlamp height adjustment		•
	Brake priority BOS		•
	Car search function		•
	Automatic lock		•
	Unlock when crashing		•
	MP5 (indicate size) + reverse image		— without reverse image
	Mobile Internet Mobile Mapping		-
	Bluetooth speakerphone		•
Comfortable entertainment	Automatic air conditioner		•
	Foot blowers of second row		-
	Headlights delayed off		•
	One-button start		•
	One key drop window for remote control key		•
	Boned wiper		•
	Boneless wiper		-
	Engine hood pneumatic support rod		— Manual
	Printed antenna		•
	Front ceiling USB×1, Armrest Box USB×2 (One data interface, one charging connector)		•
	USB audio and video play		•
	Number of Speakers		2
Safety Devices	ABS+EBD		•
	(BA)		•
	Reverse Parking Sensor		•
	Engine Immobilizer		•
	Body Immobilizer		•
	Pedestrian protection		•
	Lower guard plate of engine		•
	Lower guard plate of fuel tank		•
	Safety belt of the front row	Ordinary safety belt	•
		safety belt with pre-tensioner and force limiter	-
		Seat belt reminder of Driver side not fastened	•
		Seat belt reminder of Co-driver side not fastened	-
		Mid 3 points safety belt	-
		Seat belt reminder of second row side not fastened	-
Other	Towing capacity -3T		•
	C-level anti-corrosion for Chassis, body related components		•